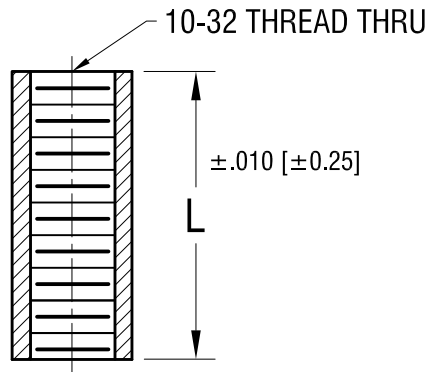
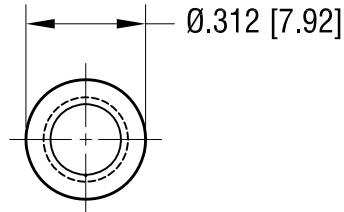


ACTUAL SIZE



PART NUMBER 467



PART NO.	'L' DIM.
467	.250 [6.35]
468	.375 [9.52]
469	.500 [12.70]
470	.750 [19.05]
471	1.000 [25.4]

NOTE:

1. MAT'L: RESIN BASED MOLDED PHENOLIC

9.28.23	CHANGE AS PER ECN 23-183	A
DATE	DESCRIPTION	REV.

KEYSTONE ELECTRONICS CORP.			
www.keyelco.com • NEW HYDE PARK NY 11040 • Tel (516)328-7500			
PART NAME			
THRADED ROUND STANDOFF			
MATERIAL			
AS NOTED			
FINISH		DRN BY	DATE
NONE		BOONE	2.06.97
		APP'D	SCALE
		RH	2X
TOLERANCES	INCH [MM]	CODE	DWG NO.
DECIMAL	± .005 [± 0.13]	C	467 - 471
ANGULAR	± 1°		
UNLESS OTHERWISE SPECIFIED			